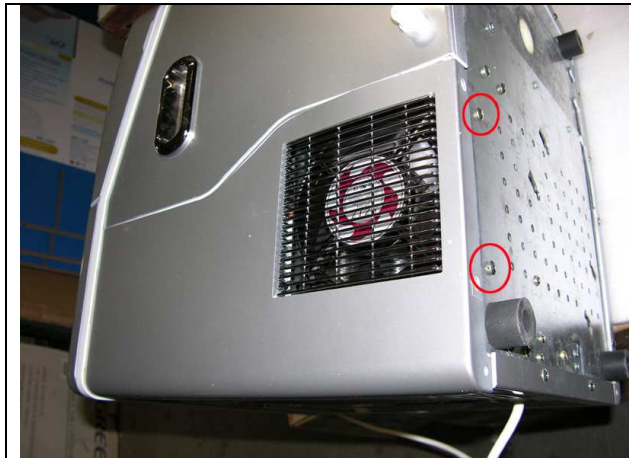


MODEL: IM-100/IM-101/101S
Instruction on Replacing the Switch:

1. Please remove the two screws below the fan (IMG-01).
2. Please remove the two screws on the back of the unit. One of the screws is covered by the label. (See IMG-02 to IMG-03).
3. There are two more screws at the bottom of this unit. Please unscrew them. (IMG-04).
4. After removing the back cover, please also remove the six screws on the metal strip (IMG-05).
5. Take off the cover of the plastic box (IMG-06 and IMG-07).
6. Locate the switch (IMG-08) and remove the five screws (IMG-09).
7. Unplug the switch in the plastic box (IMG-10).
8. Replace with the new switch.
9. Put back the cover of plastic box, metal strip, the back and side housing of the unit.



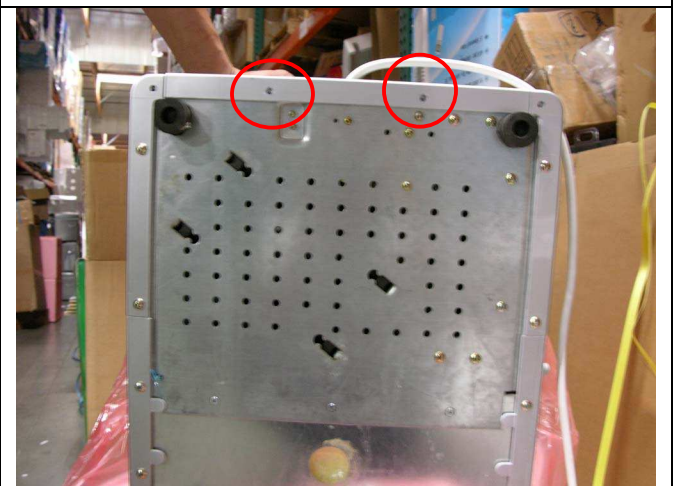
<IMG-01>



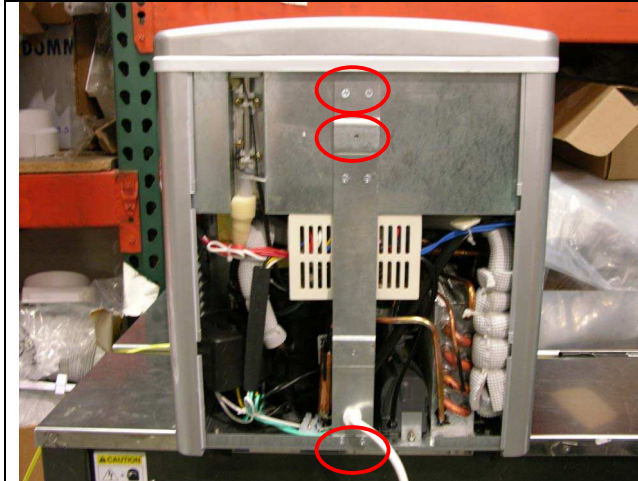
<IMG-02>



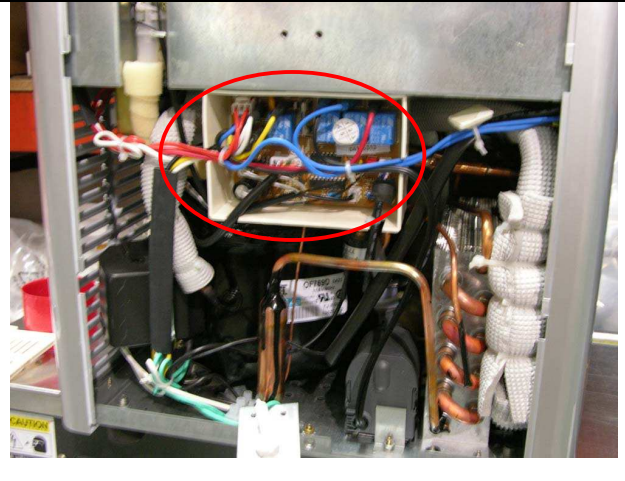
<IMG-03>



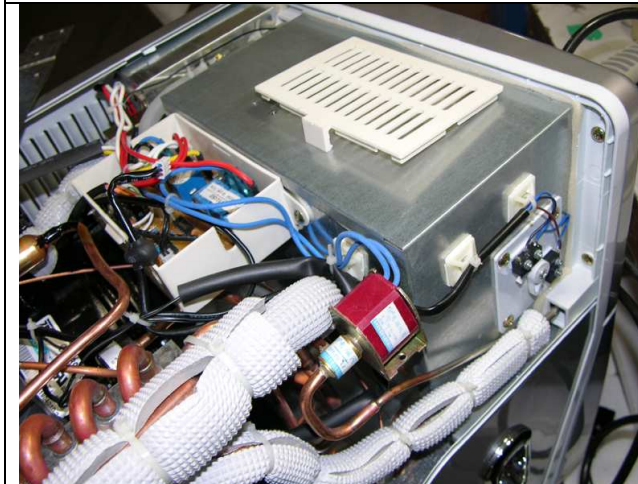
<IMG-04>



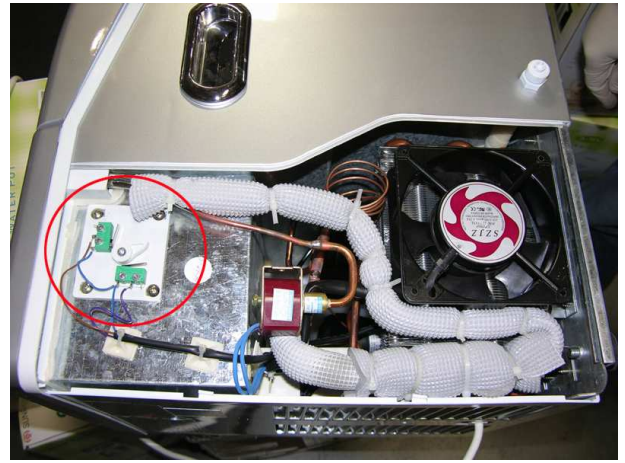
<IMG-05>



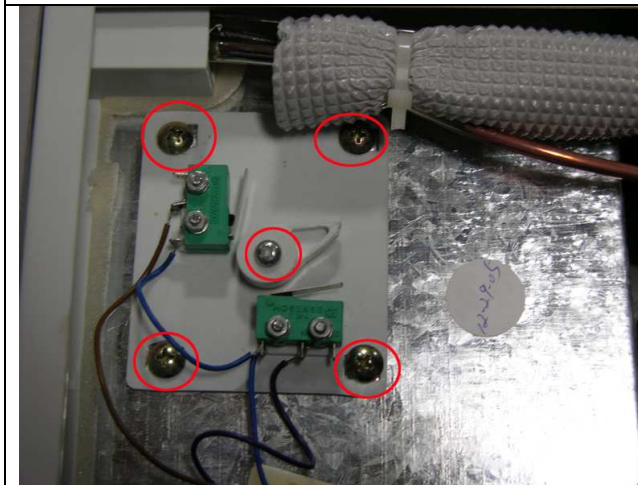
<IMG-06>



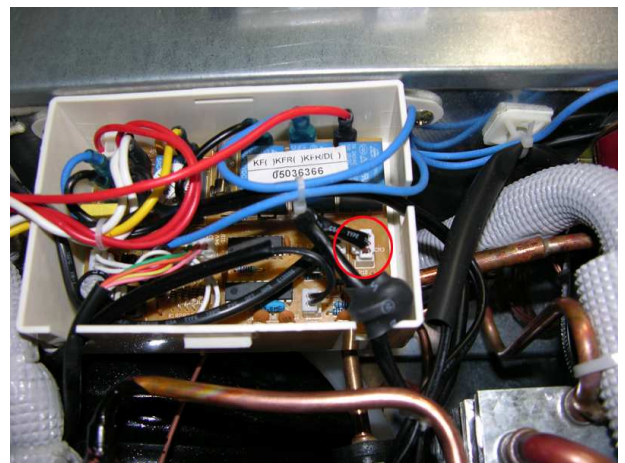
<IMG-07>



<IMG-08>



<IMG-09>



<IMG-10>