



***16" OUTDOOR MISTING FAN***



***Model: SF-1666M***

***READ AND SAVE THESE SAFETY INSTRUCTIONS BEFORE USE***

## **IMPORTANT SAFETY INSTRUCTIONS**

**When using electrical appliances, basic precautions should always be followed to reduce the risk of fire, electric shock, and injury to persons, including the following:**

1. Use this fan only as described in this manual. Other uses not recommended may cause fire, electric shock or injury to persons.
2. This product is intended for household use ONLY and not for commercial or industrial use.
3. To protect against electric shock, do not immerse unit, plug or cord in water or spray with liquids.
4. Close supervision is necessary when any appliance is used by or near children.
5. Unplug fan from outlet when not in use, when moving from one location to another or before cleaning.
6. Avoid contact with moving parts.
7. Do not operate in the presence of explosives and/or flammable fumes.
8. Do not place fan or any parts near an open flame, cooking or heating appliance.
9. Do not operate fan with a damaged cord, plug or after the fan malfunctions or has been dropped or damaged in any manner.
10. Do not let cord hang over the edge of a table or counter, or let it touch hot surfaces.
11. To disconnect, grip plug and pull from wall outlet. Never yank on cord.
12. Always use on a stable and level surface.
13. Do not hang or mount fan on a wall or ceiling.
14. Do not operate without fan grills properly in place.
15. To reduce the risk of electric shock, do not use extension cord with this fan.
16. To reduce the risk of electrocution, keep all connections dry and off the ground. Do not touch the plug with wet hands.
17. Do not operate fan until fully assembled.
18. Ensure the correct voltage is being used prior to plugging in your fan (120V AC electrical outlet).
19. Do not immerse fan or expose fan to any form of liquid.
20. Do not operate the fan directly adjacent to curtains, plants, window covering, etc. to avoid accidental entanglement.
21. While your fan is tolerant to exposure of most weather situations, we recommend that you bring the fan indoors or to a covered location during periods of extreme cold, snow or rain.
22. Always keep your fan covered when not in use to prevent excessive exposure to moisture and sun.
23. Do not submerge your fan under water and keep a safe distance from pools, outside water features or irrigation sprinklers.
24. To avoid potential fire hazards, never place your fan or its electrical cord under rugs or carpeting.
25. DO NOT use when raining. Rain may create electrical hazard.

### **SAVE THESE IMPORTANT SAFETY INSTRUCTIONS**

**WARNING: To reduce the risk of fire or electrical shock and injury to persons, DO NOT use in a window.**

**WARNING: Do not use this fan with any solid state speed control device.**

### **GROUNDING INSTRUCTIONS**

This product must be grounded. If it should malfunction or breakdown, grounding provides a path of least resistance for electric current to reduce the risk of electric shock. This product is equipped with a cord having an equipment-grounding conductor and a grounding plug. The plug must be plugged into an appropriate outlet that is properly installed and grounded in accordance with all local codes and ordinances.

**DO NOT UNDER ANY CIRCUMSTANCES REMOVE THE GROUND PRONG OR GROUND FAULT UNIT.**

Removal or tampering of the power cord will void warranty

### **DANGER**

Improper connection of the equipment-grounding conductor can result in a risk of electrocution. Check with a qualified electrician or service personnel if you are in doubt as to whether the outlet is properly grounded. Do not modify the plug provided with the product. If it does not fit the outlet, have a proper outlet installed by a qualified electrician. Do not use any type of adaptor with this product.

### **GROUND FAULT CIRCUIT INTERRUPTER (GFCI)**

This fan is provided with a ground fault circuit interrupter (GFCI) built into the plug of the power supply cord. This device provides additional protection from the possibility of electric shock.

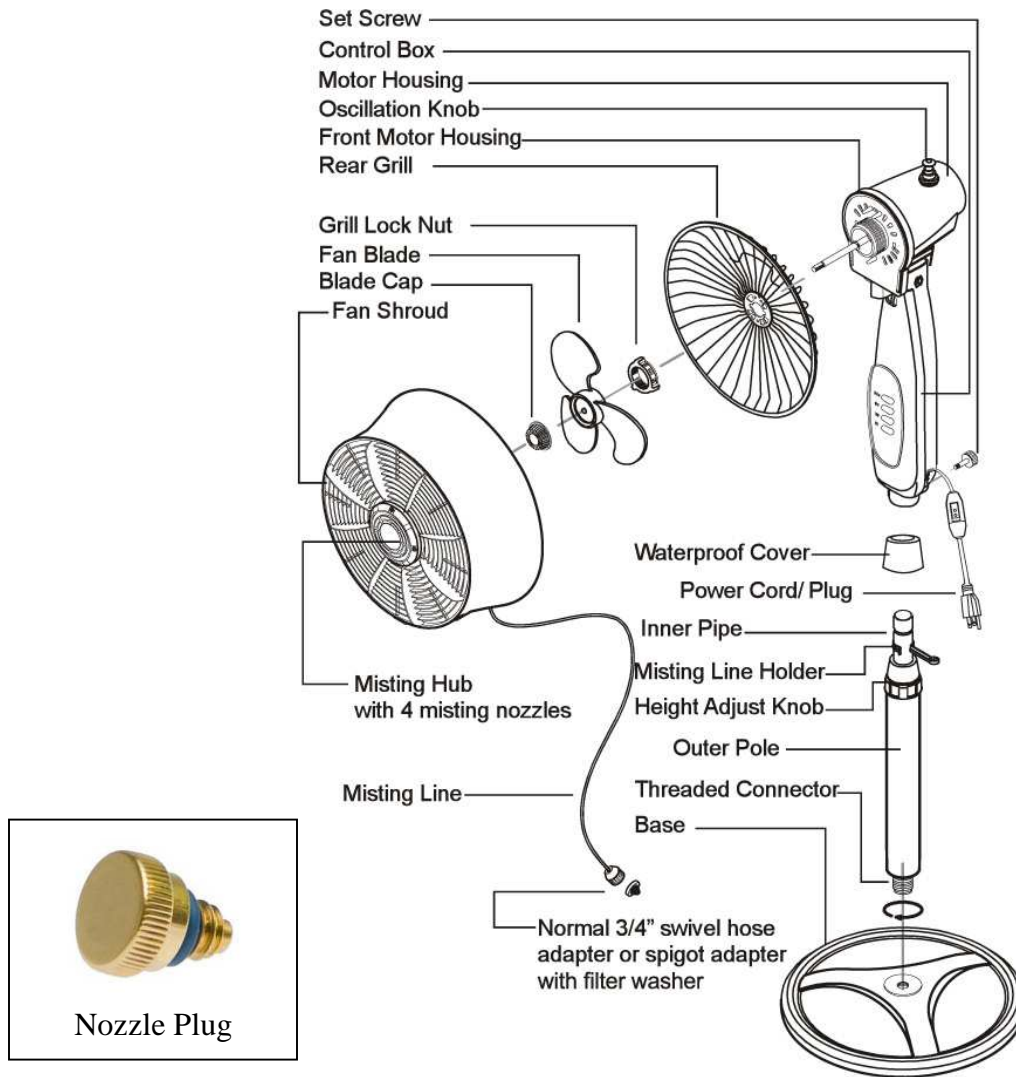
Should replacement of the plug or cord become necessary, use only identical replacement parts that include GFCI protection.

Press the TEST button (then RESET button) every month to assure proper operation.

### **UNPLUG THE FAN WHEN NOT IN USE.**

This fan is intended for outdoor use but may be used indoors **WITHOUT THE MISTING FEATURE.**

## PARTS IDENTIFICATION



### Accessories

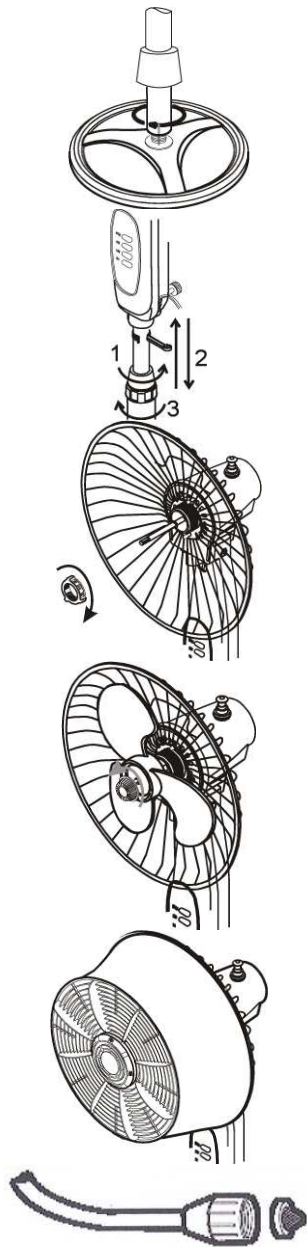
- Extra nozzle x 1
- Nozzle plug x 1: replace misting nozzle with nozzle plug to block water atomization where mist is not desired or needed.

The important safety instructions of the fan shall include the following statements:

- This product employs overload protection (fuse). A blown fuse indicates an overload or short-circuit situation. If the fuse blows, unplug the product from the outlet. Replace the fuse as per instructions and check the product. If the replacement fuse blows, a short-circuit may be present and the product should be discarded or returned to Sunpentown for examination and/or repair.
  - Do not operate any fan with a damaged cord or plug. Discard fan or return to Sunpentown for examination and/or repair.
  - Do not run cord under carpeting. Do not cover with throw rugs, runners or similar coverings. Do not route cord under furniture or appliances. Arrange cord away from traffic area and where it will not be tripped over.
1. Grasp plug and remove from receptacle; do not unplug by pulling on cord.
  2. Open fuse cover. Slide open fuse access cover on top of attachment plug towards blades.
  3. Remove fuse carefully.
  4. Risk of fire. Replace fuse only with 5 amp, 120 volt fuse.
  5. Close fuse cover. Side close the fuse access cover on top of attachment plug.

# ASSEMBLY INSTRUCTIONS

**Important: Assemble the fan before plugging it in.**



1. Screw threaded outer pole into threaded base. Hand tighten until firmly secured. Use no tools.

**HEIGHT ADJUSTMENT:** Loosen the height adjustment knob (counter-clockwise), adjust height to desired position and tighten the knob (clockwise).

2. Loosen the set screw on the back of the control box and set the control box onto the inner pipe. Then tighten the set screw to secure the control box and motor head to the inner pipe. When adjusting the inner pipe, always keep the waterproof cover matched with the height adjustment knob.

3. Unscrew the guard lock nut by turning it counter-clockwise. Mount the rear grill (with the handle in the upright position) to the motor housing by matching its 3 holes to the 3 round pins on the front motor housing. Reinstall and tighten the guard lock nut.

4. Insert the fan blade onto the motor shaft by matching the slot of the blade with the D-shaped cut out on the motor shaft. Secure the blade by screwing the blade cap onto the shaft counter-clockwise.

5. Attach the fan shroud to the rear grill by snapping it onto the rear grill. The screw at the bottom of the fan shroud may have to be loosened slightly before attempting to snap on the fan shroud to the rear grill. Start by at the top and work your way to the bottom. The fan shroud will snap on to the rear grill. There is a screw on the bottom of the fan shroud that can be tightened to hold it in place.

6. Push and twist one end of the 6-foot hose into the Swivel Adapter. Insert screen washer into swivel adapter and attach to outdoor hose or spigot.

## IMPORTANT INFORMATION

THIS FAN IS INTENDED FOR OUTDOOR USE BUT MAY BE USED INDOORS WITHOUT THE MISTING FEATURE. Place the fan on a level surface near an electrical outlet. Place the fan out of the reach of children. Do not insert anything into the grill. If moving the fan to a different location, switch it off and unplug from the socket.

## **OPERATING INSTRUCTIONS**

Place the fan on a level surface. Plug the plug into a standard 120volt AC wall outlet with ground. To operate, push the control button corresponding to the desired speed: LOW, MED or HIGH. To stop operation, press the OFF button.

THE ANGLE OF THE FAN HEAD IS NOT ADJUSTABLE.

OSCILLATION - Press the knob down (on the motor head) for fan oscillation or pull the knob up to stop oscillation.

MISTING - Attach the  $\frac{3}{4}$ " hose adapter to any  $\frac{3}{4}$ " (standard) garden hose or spigot. Misting function (on/off) is controlled from the water source.

**WARNING: DO NOT USE MISTING FEATURE INDOORS!**

## **NOZZLE CLEANING INSTRUCTIONS**

**BE SURE THE ELECTRICAL PLUG IS REMOVED FROM THE ELECTRICAL SOCKET BEFORE ATTEMPTING ANY CLEANING OR MAINTENANCE.**

- Turn fan off and gently tap the nozzles with the head of a screwdriver to loosen any sediments that may have accumulated.
- If tapping does not clear the nozzle, unscrew each nozzle and place in a container of vinegar or a household lime and scale remover for approximate 30 minutes. Make sure to stir or shake the solution every few minutes to help loosen debris. Heavier deposits may require longer soaking time and/or additional scrubbing of the nozzles with a stiff non-metallic brush.
- After soaking, shake the nozzles – you should hear a rattling sound. If none is heard, gently tap the nozzle against a solid surface to loosen any obstruction. If still no sound is heard, the nozzle should be replaced.

**IMPORTANT:** Never attempt to clear nozzles with pins, nails or other metal objects as this can damage the misting orifice.

To purchase replacement nozzles, contact Sunpentown Customer Service at 800-330-0388.

## CARE & STORAGE

- Turn off power and unplug unit before cleaning.
- Use only a soft moistened cloth with a mild soap solution to clean the fan.
- Do not immerse fan in water.
- Do not use gasoline thinners or other chemicals to clean fan.
- To dismantle for cleaning or long term storage, follow the assembly instructions in reverse order. The fan blade may be washed in warm water with a mild detergent. Alternatively, it may be wiped clean with a soft damp cloth. Be sure it is completely dry before re-fitting.
- The front/rear grills, stand and base can be cleaned with a soft brush or soft damp cloth.
- For storage, clean fan carefully as instructed and store in its original box or cover with plastic/cloth. Store in a clean, dry place.

**CAUTION:** There are no consumer serviceable parts inside this fan. If you experience a problem, please see warranty for information. Please do not attempt to open the motor housing of the fan; doing so may cause damage to the fan or personal injury as well as voiding your warranty.

## TROUBLESHOOTING

No power	<ul style="list-style-type: none"><li>- Make sure unit is plugged into a live socket</li><li>- Press RESET button on the GFCI plug</li></ul>
Fan is unstable	<ul style="list-style-type: none"><li>- Make sure threaded extension pole is firmly secured into base; do not use tools to tighten</li></ul>
Fan is not missing	<ul style="list-style-type: none"><li>- Make sure <math>\frac{3}{4}</math>" hose adapter is connected to garden hose or spigot and the valve is open</li><li>- Nozzles require cleaning/replacement. Please refer to page 4.</li></ul>
Leak at tube attachment	<ul style="list-style-type: none"><li>- Unscrew the swivel adapter by hand. Check that filter is evenly seated in cap and re-install.</li><li>- Washer may be damaged and needs replacement. Sediment, rough hose edges or over-tightening may damage the washer.</li></ul>
Areas with hard water	<p>In locations with hard water, the use of a polyphosphate filter is recommended to remove sediment and lessen the effects of hard water deposits. The filter is to be attached directly to your <math>\frac{3}{4}</math>" hose bib before the swivel adaptor. Polyphosphate filters should be replaced approximately after six months of use.</p>



## Your Guarantee

***If this product is found to be faulty as a result of faulty materials or workmanship within one year from date of purchase, it will be repaired free of charge.***

This guarantee is subject to the following terms:

- Sunpentown must be notified of the fault.
- Proof of purchase must be presented to Sunpentown's nominated representative.
- The warranty will be void if the product is modified, misused or repaired by an unauthorized person.
- The warranty after repair will not be extended beyond the original one-year period.
- All replacement parts will be new or reconditioned.
- Parts, which are replaced, become the property of Sunpentown.
- The warranty applies for the use of the product in the USA only.

***What is NOT COVERED:***

- Warranty does not include freight charges.
- Incidental or consequential damage caused by possible defects with this product.
- Damage to product caused by improper power supply voltage, accident, fire, floods or acts of nature.
- Failure of product resulting from unauthorized modifications to the product.
- Improper installation or failure to perform the necessary maintenance.

This GUARANTEE is in addition to your Statutory Rights

**SUNPENTOWN INTERNATIONAL INC.**  
**14625 Clark Avenue, City of Industry, CA 91745**  
**Tel: 626-336-2299 · Fax: 626-336-7116**  
***service@sunpentown.com***  
**www.sunpentown.com**

Kuo Tong Electrical Technological (Huizhou) Co, Ltd.  
Yin Shan Industrial Area, Liangjing Town, Huiyan, 516265 Huizhou City, Guangdong, P.R.C.