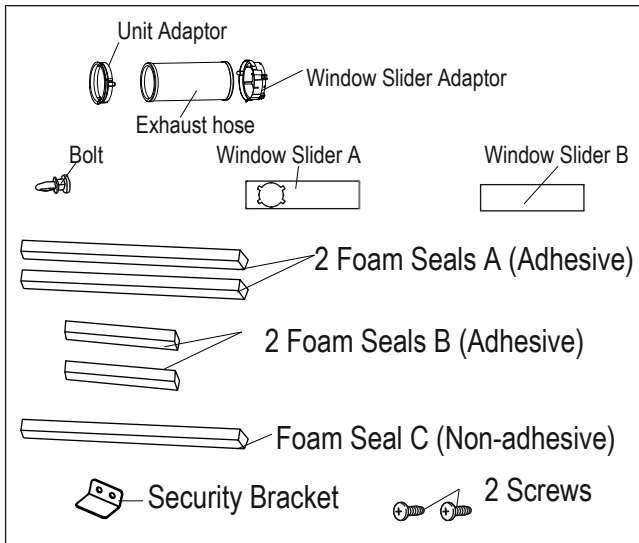


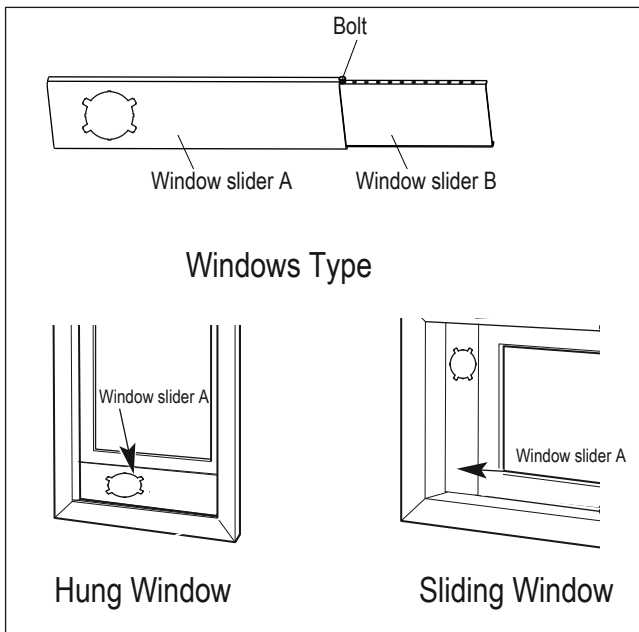
Quick Installation Guide

1. Check Installaton Kit

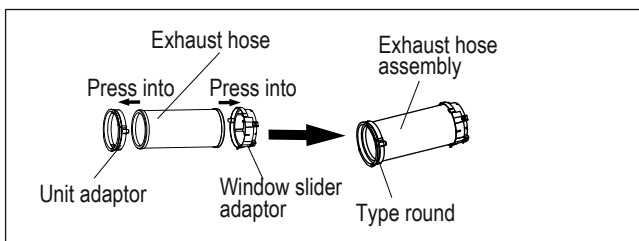


2. Check your window length and type.

Check your window length/width and decide if one or both slider pieces will be used. If using both pieces, adjust to required length and use the bolt to secure.

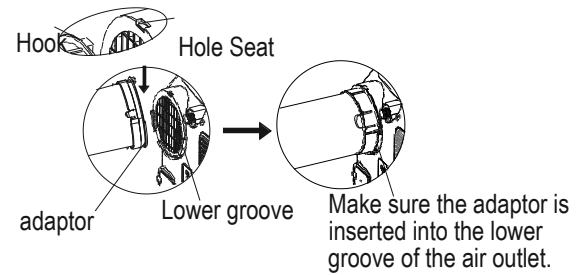


3. Preparing the Exhaust Hose assembly

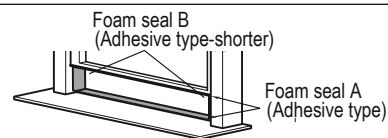


4. Install the Exhaust hose assembly to the unit .

Align the hooks on the unit adaptor to the hole seat of the air outlet (located on the back of the unit). Insert the adaptor and slide hose assembly downwards into the groove.

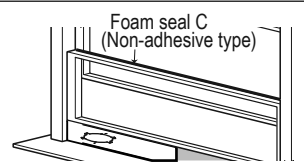


5.



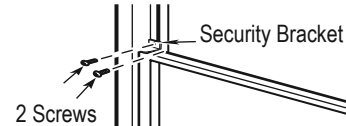
Cut the adhesive foam seal A and B strips to the proper lengths, and attach them to the window sash and frame as shown.

6.



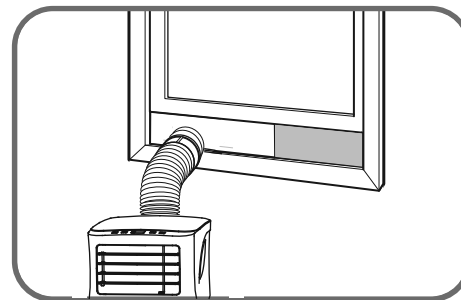
Cut the non-adhesive foam seal C strip to match the width of the window. Insert the seal between the glass and the window frame to prevent air and insects from getting into the room.

7.



If desired, install the security bracket with 2 screws as shown.

8.



Insert the window slider adaptor into the hole of the window slider.

NOTE: If you need more detail information for installation, refer to the " Installation " in the instruction manual. All the illustrations are for explanation purpose only. Your machine may be slightly different. The actual shape shall prevail.